



## Boys and Girls Club of Clifton



### Kinderkare

181 Colfax Avenue  
Clifton, NJ 07013

Tel: 973-773-2697 Ext. 143

[www.bgclifton.org](http://www.bgclifton.org)

Hours: Monday through Friday  
3:00PM to 6:00PM

For Children Attending  
Kindergarten



#### Transportation:

- We provide daily transportation from your child's school to our facility.
- Transportation is also provided when public schools have a half-day session.
- Since children will be going on a bus, please make sure their lunch box fits in their backpack!
- Be sure to label all of your child's belongings. This will help eliminate any lost belongings during transport.

#### Daily Activities:

Circle time, music, story time, academics, indoor/outdoor play, learning centers, art, Smartboard & iPad interaction

#### Snack:

We provide juice, water, crackers, and cereal for snack

#### Important Information:

- During public school scheduled closings, we are usually open from 8:00 AM - 6:00 PM.
- Pizza may be purchased for lunch. \$3 for one slice; \$5 for 2 slices. Snack and drink included!
- Parents **MUST** pay day prior!!

#### Tuition:

\$225 a month plus a \$40 yearly membership to the Boys and Girls Club of Clifton

- Tuition is due the first of every month with a grace period of five working days.
- All payments must be paid in the Early Childhood Office.
- We accept cash, credit and debit.
- We also offer auto pay.
- Failure to pay tuition on time will result in a \$25 late fee. Tuition received after the 15<sup>th</sup> of the month will result in a \$50 late fee.
- **4C's Program** -for those in the 4Cs program, it is your responsibility to adhere to the 4Cs protocols in order to stay in the program.



#### Income Eligibility:

- For a reduced rate fee, you must provide us with a copy of your previous year Income Tax Return
- Without this information, we cannot consider your child for a reduced rate.

### Attendance Procedures:

Pick-up and drop-off are at 181 Colfax Avenue

For everyone's safety, when dropping off/picking up, please park in a parking spot. **DO NOT PARK ALONG THE CURB!** On no school days, it is the parent's responsibility to walk their child into the building and to their classroom.

Once in the building:

- All parents need a security key card to enter classrooms.
- Once in the classroom, parents need to sign their child in /out, please specify the time. It is a state requirement!
- If your child is absent, it is the parents' responsibility to call and inform the classroom teacher. Any student absent more than 5 days due to illness shall not be re-admitted without a doctor's note.

### Late Fee Policy:

We close at 6:00PM. Pick up after 6PM will result in a late fee of \$1.00 per minute.

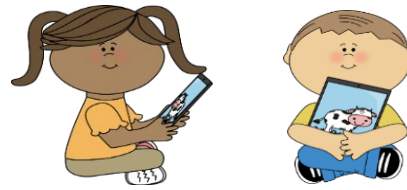
- We will use our cell phones as the 'official time'.
- In the event you are late, the late fee **MUST** be paid the following day.
- Unfortunately, your child may not attend our center until payment is received.

### School Calendar:

We are open all year long with the exception of the following holidays:

- Last week of August / First week of September
- Thanksgiving Day and Friday
- Christmas and New Years
- President's Day
- Good Friday
- Memorial Day
- Last week in June
- Independence Day

**\*Dates Subject to Change\***



### Inclement Weather:

Whenever Clifton Public Schools close due to inclement weather, we **ALSO CLOSE**

- We **WILL NOT** notify you by phone
- Any time after 5:30AM you can log on to [WWW.CLIFTON.K12.NJ.US](http://WWW.CLIFTON.K12.NJ.US)
- In the event public schools have a delayed opening, we will open our regular hours.

### Toy Policy:

- Toys, stuffed animals, hand held electronic games, etc. are not permitted in school.

Your cooperation in this matter is greatly appreciated!



### Kinderkamp:

- 8-week summer program
- Hours are 8:00AM-5:30PM
- Weekly field trip
- Swimming

### Child's Safety:

- It would be preferred for your child to wear sneakers or closed toed shoes with straps. For safety reasons, no sandals or flip flops!

Should you have any questions or concerns feel free to by call us at 973-773-2697 ext.143.

We will be glad to help you!

Open Door Policy- We are here to speak with you in regards to your child during our operating hours.